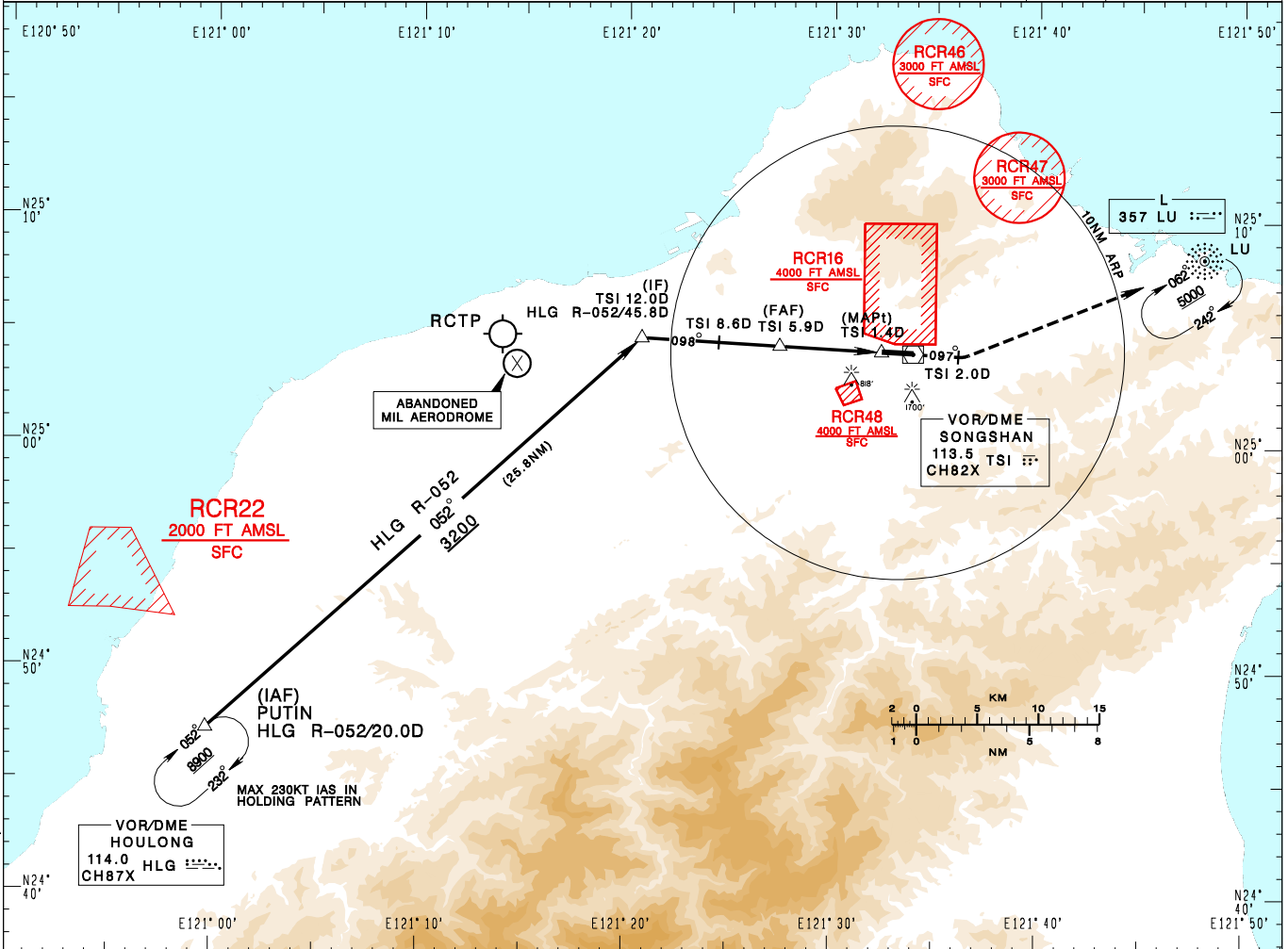


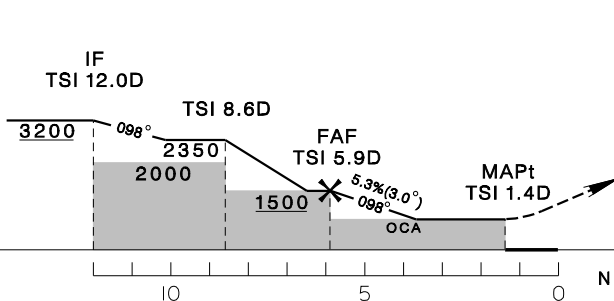
臺北/松山機場
TAIPEI/SONGSHAN AD

RCSS
VOR RWY10

| | | | | | |
|--|-----------------------|--------------------|-------------------|-----------------------|--------------------|
| TAIPEI APP 119.7 119.6 125.1 | SONGSHAN TWR 118.1 | ATIS 127.4 341 | VAR 5°W-2022 ↑ | 9100' MSA ARP 25NM | |
| Apt Elev: 18' | Rwy10 THR Elev: 13' | Trans Level: FL130 | | | Trans Alt: 11,000' |
| BEARINGS ARE MAGNETIC; DISTANCES ARE NAUTICAL MILES; ELEVATIONS, HEIGHTS IN FEET | | | | | |



| | | | |
|--------|--------|--------|--------------|
| 5.9DME | 5.0DME | 4.0DME | DIST to TSI |
| 1500 | 1200 | 890 | ADVISORY ALT |



MISSED APCH:
CLIMB DIRECT TO TSI, THEN TRACK TSI R-097 TO TSI 2.0D, THEN TURN LEFT DIRECT TO LU, CLIMB TO 5000 AND HOLD.
IF UNABLE TO REACH 5000 AT LU, ADVISE ATC FOR RADAR VECTOR.

MINIMA (OCA IN FT, VIS IN M, OCH IN FT)

| CATEGORY | A | B | C | D |
|-----------------------|---------------------|-----------------------|--------------|---|
| STRAIGHT IN | 860/800 RVR 750 842 | 860/1200 RVR 1200 842 | 860/3100 842 | |
| STRAIGHT IN (ALS OUT) | 860/1600 842 | 860/2000 842 | 860/3800 842 | |
| CIRCLING | 1180/3600 1162 | NA | | |

NOTE
1. A 1700ft-HIGH BUILDING AT 2.1 NM SOUTH OF THR 28.
2. A 818ft-HIGH BUILDING AT 2 NM SW OF THR 10.
3. CIRCLING ONLY AUTHORIZED FOR CAT A HELICOPTERS.

*DME REQUIRED.

CHANGES: OCA, IAF, LEG INFORMATION; RCR49 COMPLETELY WITHDRAWN; MAG VAR AND TRACK